

## **BERO-CENTER Oberhausen (Germany)**

### **REDEVELOPMENT / REFURBISHMENT, NEW BUILDING**

**Client:** Leopard Germany BERO Senior GmbH & Co. KG, Berlin

**Project manager:** Gleeds Deutschland GmbH, Braunschweig

**Architect:** MESA Development BR GmbH, Stuttgart

**Our services:**

- Structural design
- Establishing the basis
- Preliminary design
- Final design
- Approval documentation
- Preparation of contract award
- Thermal building physics
- Sound insulation

**Brief description:**

Extension and alteration of a shopping centre built in 1971 and construction of a new build car park

- total gross floor area of 84,000 m<sup>2</sup>
- foundation of the new buildings by vibrated stone columns for ground improvement, rising single and strip foundations
- unsupported floor slab
- flat roof construction with trapezoidal sheet covering

**New build annex**

- 1 storey, concrete and steel structure
- bracing by embedded reinforced concrete columns
- open web steel girder with spans of 25 m
- equipment platform above the main roof, steel construction

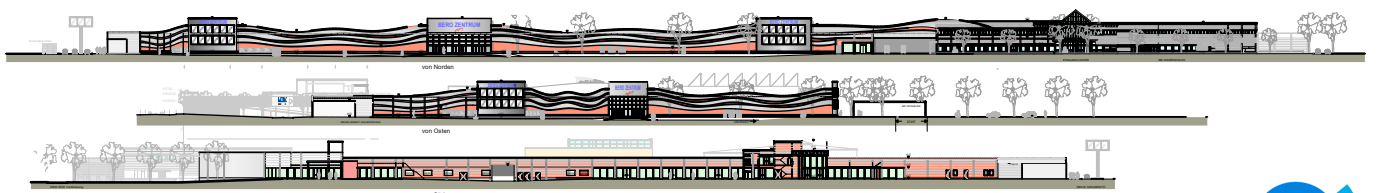
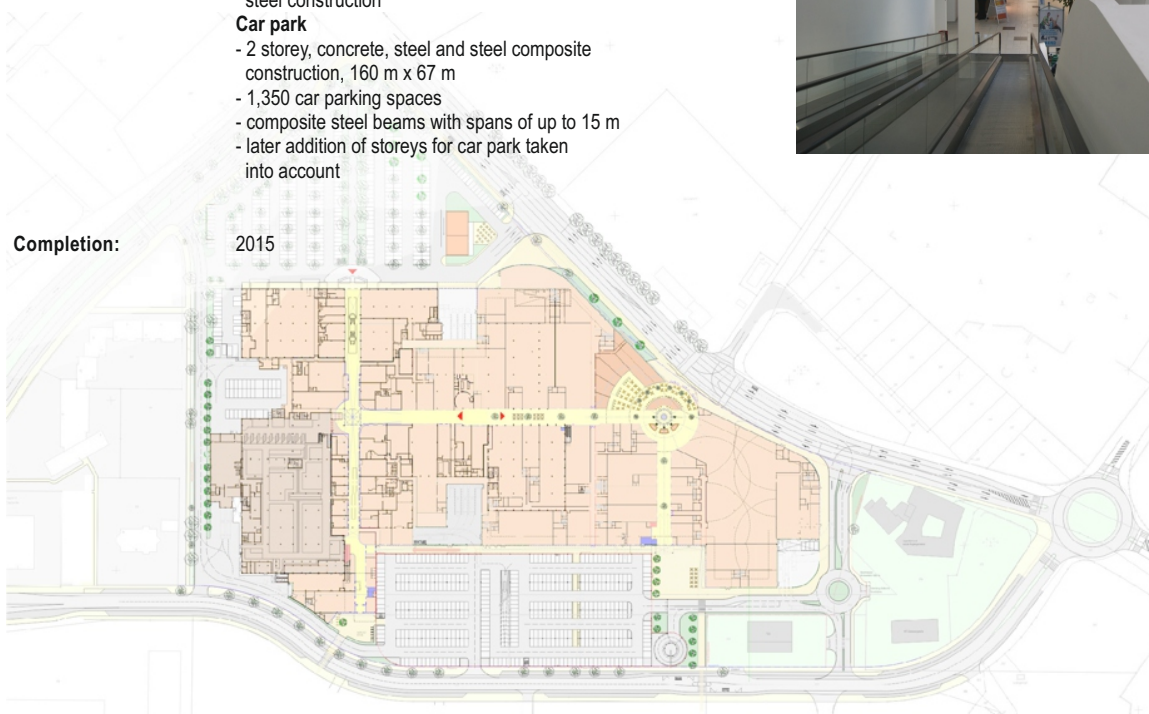
**Car park**

- 2 storey, concrete, steel and steel composite construction, 160 m x 67 m
- 1,350 car parking spaces
- composite steel beams with spans of up to 15 m
- later addition of storeys for car park taken into account



**Completion:**

2015



Pictures / Illustrations: ZPP INGENIEURE AG, MESA Development BR GmbH

**Pfeifer** INTERPLAN is a registered trade mark of ZPP Ingenieure AG  
**ZPP INGENIEURE**