

WINERY KELLER Oberbergen (Germany)

NEW BUILDING

Client: Franz Keller, Vogtsburg-Oberbergen

**Certified
Inspection Engineer:** Prof. Dipl.-Ing. Matthias Pfeifer

Our services: Structural engineering inspection in accordance with regulations and standards
Static calculations
Structural fire protection
Earthquake engineering
Execution planning
Façade planning
Random monitoring of the structure during the building phase

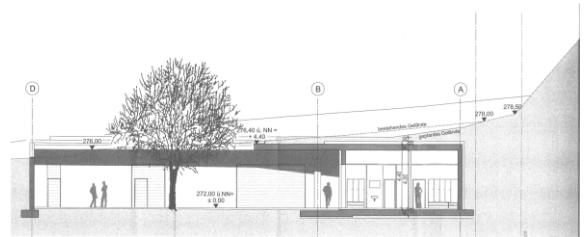
Brief description: Construction of a new winery with production floor, bottling shop, storage rooms, restaurant and shop/sales counter

- 3-storey solid construction
- terraced construction built fitting in to the slope of the dished terrain
- hillside face braced and shored using a permanent fivefold back-anchored bore pile wall whose posts reach into the earth by up to 15 m
- one-sided withstanding earth pressure
- slabs take a working load of up to 20 kN/m², suitable for fork-lift trucks
- slabs spanning up to 10 m
- tapered circular columns with a diameter at the bottom end of 0.45 m and at the top end of 1.0 m (high piercing load)
- stiffening of building through reinforced concrete walls
- staircase banister made of clamped, secured glass elements
- top of stairway partially constructed out of walk-on-able glass elements
- green flat roof with a layer of soil of up to 4 m
- secured two-storey, 20 m long glass facade as a post and beam structure with glass plates suspended at the top supported by flexible mounts below horizontally fixed

Architects: Geis + Brantner, Freiburg

Structural engineers: Mohnke Höss, Freiburg

Completion: 2013



Pictures / Illustrations: PfeiferConsult, Geis + Brantner