

GYMNASIUM AT THE WINGERTSBERGSCHULE Lorsch (Germany)

NEW BUILDING

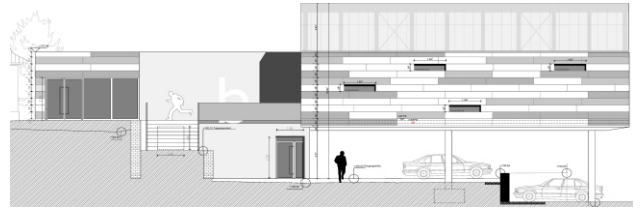
Client: Facility management district committee
of the district of Bergstraße, Hesse

Architects: Grüninger Architekten BDA, Darmstadt

Our services: Full structural design
Preliminary design
Final design
Approval documentation
Execution drawings
Preparation of contract award
Structural fire protection
Earthquake engineering
Thermal building physics
Sound Insulation
Health and safety coordination

Brief description: New building of two halls with a functional building
- building on a slope
- table construction with flat slab on 10 hinged pillars to compensate for slope
- parking below flat slab with 16 vehicle spaces
- gymnasium constructed of wood on flat slab forming a statically independent construction
- functional building with equipment, storage and changing rooms with concrete structure to stabilise the horizontal table construction
- gymnastics hall on a part of the functional building as a statically independent component

Completion: 2011



Pictures / Illustrations: ProfessorPfeiferandPartner PartGmbB, Grüninger Architekten BDA