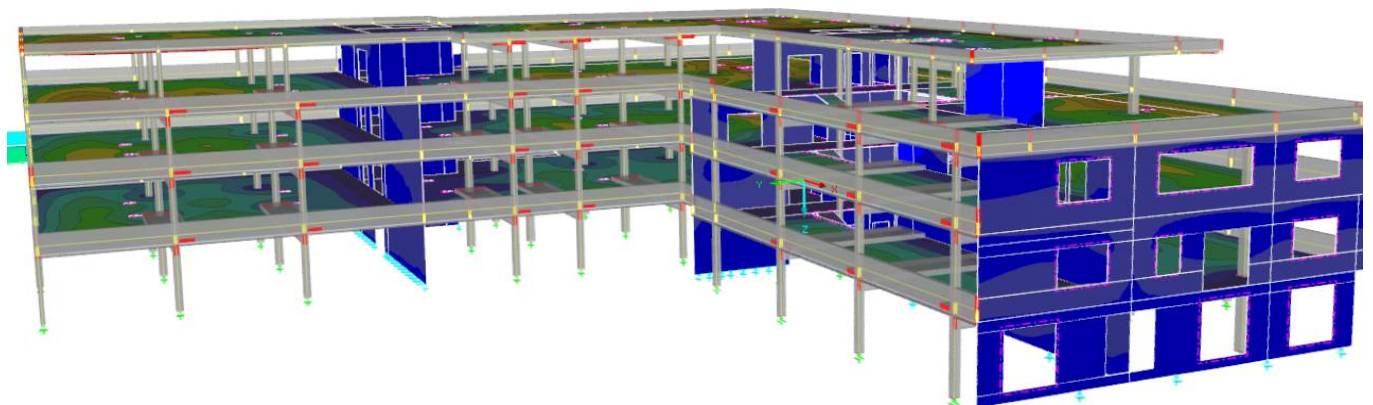
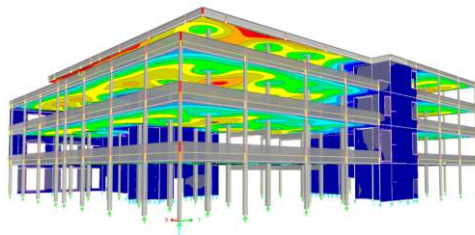
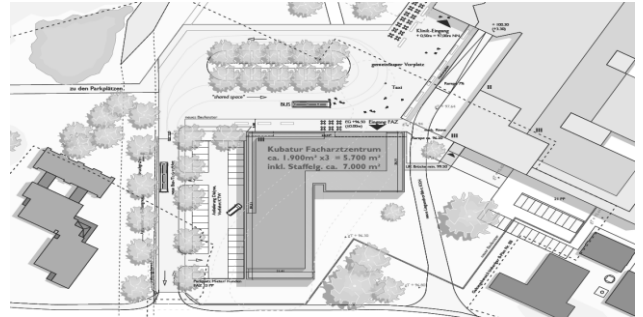


MEDICAL CENTRE AT THE REGIONAL HOSPITAL Heppenheim (Germany)

NEW BUILDING

- Client:** Biskupek Scheinert Moog
Investorengruppe, Darmstadt
- Architects:** Schümann Sunder-Plassmann
und Partner Architekten BDA, Lübeck
- Our services:** Full structural design
Establishing the basis
Preliminary design
Final design
Approval documentation
Execution drawings
Structural fire protection
Earthquake engineering
Thermal isolation
Sound isolation
- Brief description:** Construction of a new medical centre
with dialysis centre, operating theatres,
specialists' surgery, chemist and café
- 4-storey building with top floor staggered
- reinforced concrete skeleton construction
- without basement
- shallow foundations
- L-shaped floor plan
- stiffening through the walls, floors and
lift core
- floor spans of up to 8 m
- lift
- connecting bridge to the existing hospital
building on the 1st floor
- flat roof
- barrier-free access
- high degree of technical complication
due to laboratory and surgery requirements
- Completion:** 2019



Pictures / Illustrations: ProfessorPfeiferandPartner PartGmb, Schümann Sunder-Plassmann und Partner Architekten BDA