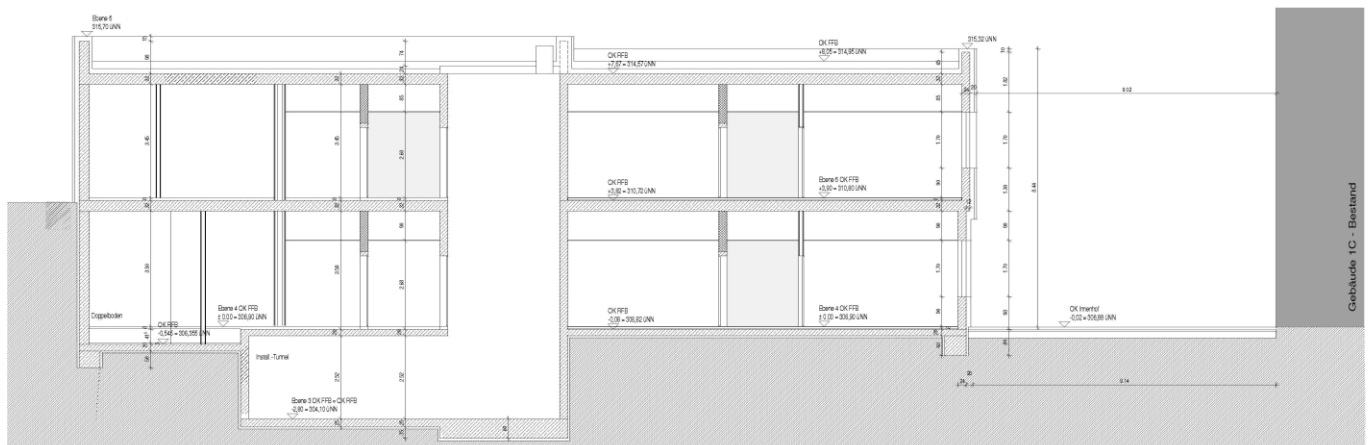


EUROPEAN MOLECULAR BIOLOGY LABORATORY - EMBL Heidelberg (Germany)

NEW BUILDING

Client:	Rainer Menzel Estate Manager, Heidelberg
Architects:	Gerstner Architekten, Heidelberg
Our services:	Full structural design Establishing the basis Preliminary design Final design Approval documentation Execution drawings Preparation of contract award Assisting award process Thermal building physics including humidity protection
Brief description:	New building of a complex for the "German Live Cell Imaging Centre" and of the data processing centre for the entire EMBL research facility - solid structure with two building parts - underground connecting passage between laboratory and building services facility - underpinning of new slabs with precast girders spanning 18 m - special requirements for the flat slabs due to laboratory usage: high natural frequencies, low deflection
Completion:	2010



Pictures / Illustrations: ProfessorPfeiferandPartner PartGmbB, Gerstner Architekten

ProfessorPfeiferandPartner PartGmbB Structural engineering Building physics Fire protection Structural assessment
PfeiferINTERPLAN is a registered trade mark