

## RESIDENTIAL ESTATE SCHILDACKER, 3. PHASE OF CONSTRUCTION Freiburg (Germany)

### NEW BUILDING

**Client:** Freiburger Stadtbau GmbH, Freiburg  
**Architects:** ASTOC ARCHITECTS AND PLANNERS GmbH, Köln

**Our services:**

- Full structural design
- Establishing the basis
- Preliminary design
- Final design
- Approval documentation
- Execution drawings
- Preparation of contract award
- Structural fire protection
- Earthquake engineering
- Thermal insulation
- Sound insulation

**Brief description:**

Construction of a new building complex with five residential buildings and a mixed-use building with apartments and day-care centre for children, a total of 103 residential units

- individual 6-storey buildings in reinforced concrete and masonry
- basement floors as "white tank"
- barrier-free development
- each with shallow foundations with flexibly bedded base plate as well as single and strip foundations
- reinforcement via reinforced concrete slabs, masonry and reinforced concrete walls
- slabs spanning up to 8 m
- upper floors with balconies projecting up to 2.5m, use of load-bearing thermal insulation components (Schöck Isokorb) and supports as connecting elements
- flat roofs with photovoltaic system
- day nursery (788 m<sup>2</sup>) at ground level, due to variation of the floor plan to the standard floor plan, in particular generous, column-free areas, where highly loaded wall-like girders to absorb the loads from the upper floors are to be found

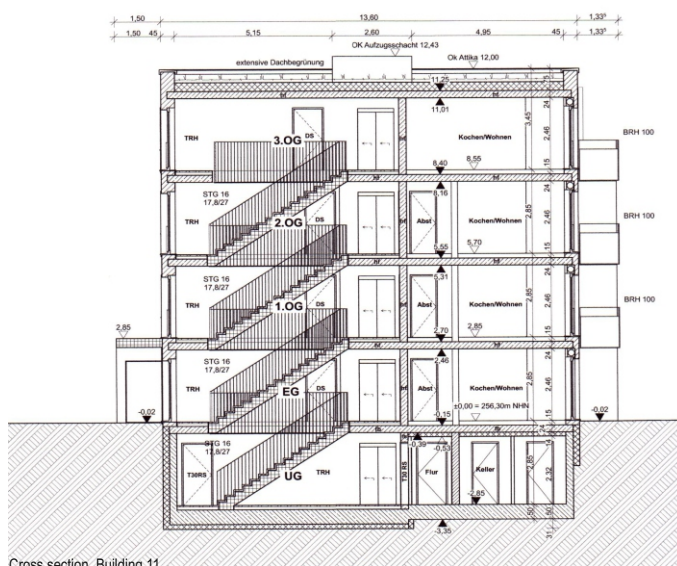
**Completion:** 2021



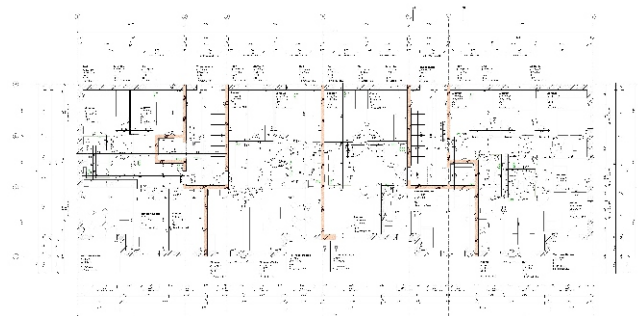
Gebäude B, Neuenburgerstraße



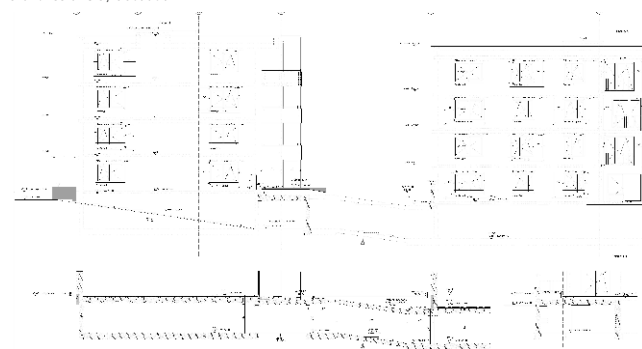
Gebäude D, Schildackerweg



Cross section, Building 11



Grundriss 3. OG, Gebäude B



Schnitt mit Durchgang im UG, Gebäude B