

ZIEHENSCHULE SCHOOL Frankfurt/Main (Germany)

NEW BUILDING / EXTENSION

Client: City Council of Frankfurt/Main Planning Office

Architects: Marcus Schmitt Architekten, Frankfurt/Main

Our services:

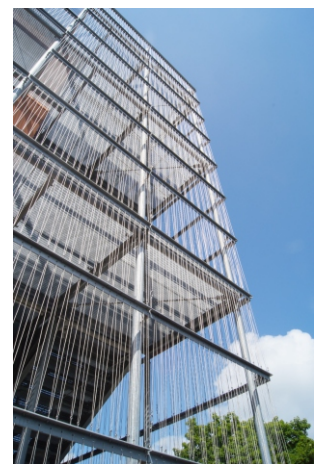
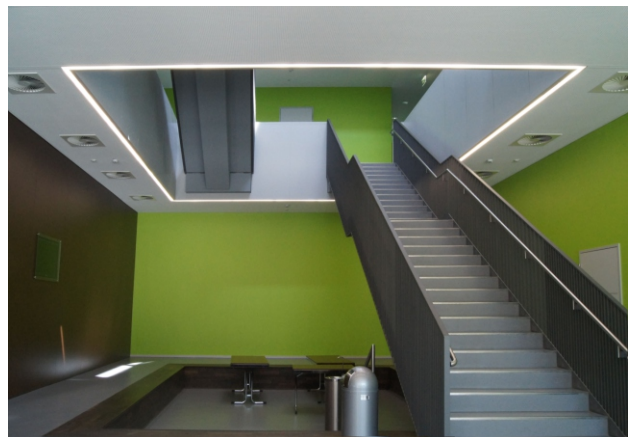
- Full structural design
- Establishing the basis
- Preliminary design
- Final design
- Approval documentation
- Execution drawings
- Preparation of contract award
- Construction supervision
- Structural fire protection
- Fire protection concept
- Planning and dimensioning of the façade system and the glasses

Brief description:

New building/extension of a grammar school to passive house standard

- 3-storey concrete structure
- extension for eleven school classes and a cafeteria
- roof lantern (3rd upper floor) made of lightweight wooden construction, which rests on two steel girders that transfer loads to the upper floors
- biaxially wide span slabs with wall support
- raft foundation on base slab
- atrium in centre of the building with staircases made of prefabricated reinforced concrete units
- second escape route via circumferential steel balconies (thermally separated)

Completion: 2012



Pictures / Illustrations: ProfessorPfeiferandPartner PartGmbB, Marcus Schmitt Architekten