

OTTO-STERN-ZENTRUM ON THE CAMPUS RIEDBERG OF THE GOETHE UNIVERSITY Frankfurt/Main (Germany)

NEW BUILDING

Client: Construction management of the State of Hesse, Rhein-Main regional branch

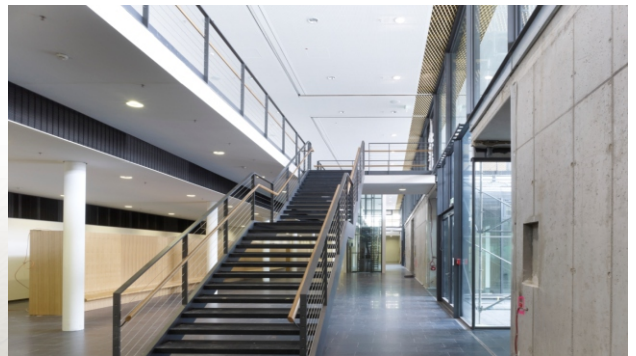
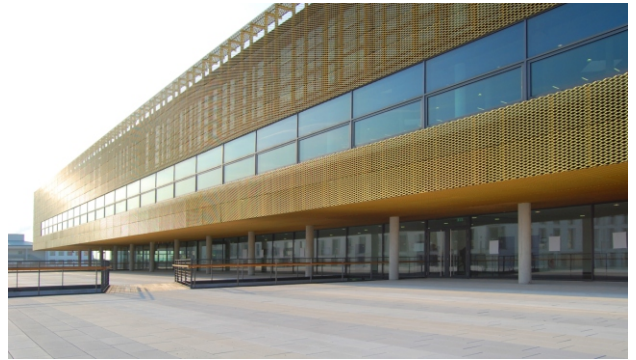
Architects: Gerber Architekten, Dortmund

Our services: Competition Consultancy (1. Price)
Full structural design
Establishing the basis
Preliminary design
Final design
Approval documentation
Execution drawings
Preparation of contract award
Structural fire protection
Project management

Brief description: New building of an infrastructure centre with library, cafeteria, foyer, six lecture halls, offices, adjoining rooms and several utility rooms

- 110 m long building consisting of a basement, an elevated basement and three upper storeys
- upper storeys with a width of 25 m
- lower storeys with a width up to 45 m
- 6 m cantilever of two storeys on north, east and south side
- more than 21 m span of lecture hall slab
- steel roof
- remaining building constructed of reinforced concrete with integrated steel girder layer to achieve cantilever
- raft foundation

Completion: 2011



Pictures / Illustrations: Professor Pfeifer and Partner PartGmbH, Gerber Architekten