

## Town Hall Bernau (Germany)

### NEW BUILDING

**Client:** Town Municipality Bernau near Berlin

**Architects:** studioinges Architektur und Städtebau BDA, Berlin

**Our services:** Full structural design  
Establishing the basis  
Preliminary design  
Final design  
Approval documentation  
Execution drawings  
Preparation of contract award

**Brief description:** Construction of a new administration complex consisting of 2 sections with offices, meeting and counsel room, canteen, bistro, exhibition areas and an underground car park.

- 6-storey central area which is surrounded by an L-shaped, 4-storey block.
- reinforced concrete construction with basement
- shallow foundations over flexibly bedded base plate
- skylight over central area, light shining into the lower floors via openings in the gallery in the 3rd and 4th floors
- reinforcement via L-shaped, multi-storey core zone with access and service areas (staircases, lifts, WC and service rooms)
- load transfer through walls and columns as well as heavy-duty wall-like beams, due to different arrangement of the load-bearing elements in the different storeys
- column-free entrance area on the ground floor and in the counsel room, load support by combined over/under beams
- facade with storey-high, narrow windows
- on the 1st floor, opening of the facade with an open, spacious corner balcony in the counsel room
- flat slabs, mainly point-supported
- flat roof, partly as roof terrace
- viewing platform with parapet on the roof, reinforced concrete construction
- underground car park for 25 cars with separate entry and exit ramps
- underground level constructed as „white tub“

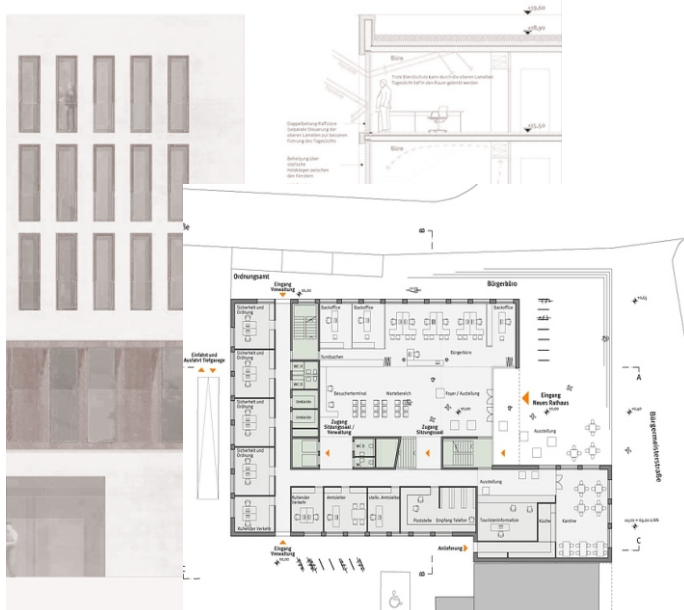
**Completion:** 2020



Rathaus Bernau, Copyright: Maximilian Meisse Fotografie



Rathaus Bernau, Copyright: Maximilian Meisse Fotografie



Pictures / Illustrations: ZPP INGENIEURE AG, studioinges Architektur und Städtebau BDA, Maximilian Meisse Fotografie