

## APARTMENT BUILDING DOLGENSEESTRASSE Berlin (Germany)

### NEW BUILDING

**Client:** KOIB Projekt 23 GmbH & Co. KG, Grünwald

**Architects:** Ioo Elwardt Lattermann Gesellschaft von  
Architekten mbH, Berlin

**Our services:**  
■ Structural design  
Approval documentation  
Execution drawings  
Preparation of contract award  
Precast parts planning

**Brief description:** Construction of 12 new apartment buildings with a total of 678 flats, common underground car park with 75 parking spaces and commercial units

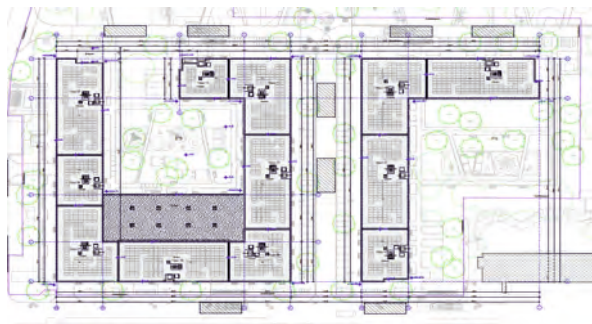
**Building**

- 10-storey solid buildings (reinforced concrete), partially with basement
- each unit consisting 4 buildings with I-shaped floor plan (total 2,357 m<sup>2</sup>)
- each unit consisting 8 buildings with U-shaped floor plan (total 5,180 m<sup>2</sup>)
- shallow foundations with flexibly bedded base plate
- slab spanning up to 8 m
- bracing via reinforced concrete slabs and walls
- due to irregular floor plan on the upper floors load transfer on the ground floor by highly loaded wall-like beams
- flat roof, with surrounding parapet

**Underground car park**

- basement with underground car park, plant rooms and tenant storage units
- europilz columns designed for punching and impact loads
- flat slabs spanning up to 8 m
- supports designed to withstand vehicle impact
- basement designed as white tank due to high groundwater level

**Completion:** 2021



Pictures / Illustrations: ProfessorPfeiferundPartner PartGmbH, Ioo Elwardt Lattermann

■ ProfessorPfeiferundPartner PartGmbH Tragwerksplanung Bauphysik Brandschutz Gutachten  
PfeiferINTERPLAN is a registered trade mark